

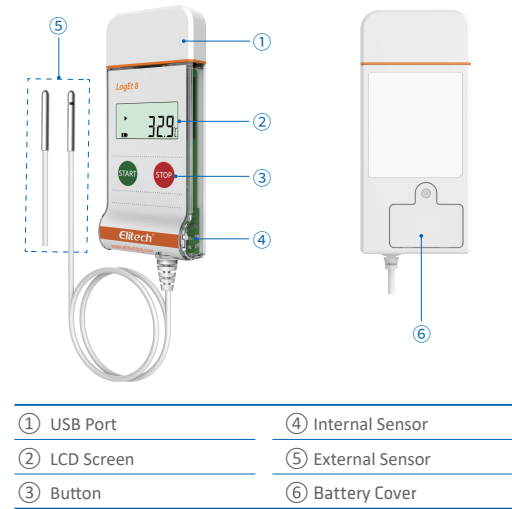
User Manual

LogEt 8 Series

Overview

LogEt 8 series data loggers can be widely used in each stage of the storage and cold chain logistics, such as refrigerated containers/ trucks, cooler bags, cooling cabinets, medical cabinets, freezers, and laboratories.

The loggers feature an LCD screen and two buttons design. They support various start and stop modes, multiple threshold settings, two storage modes (stop when full & cyclic record) and PDF report automatically generated for users to check data without using software.



1

Model	LogEt 8	LogEt 8 TE	LogEt 8 TH	LogEt 8 THE	LogEt 8 PTE	LogEt 8 UTE
Type	Internal Temperature	External Temperature	Internal Temperature and Humidity	External Temperature and Humidity	External Low Temp	External Ultra-low Temp
Measurement Range	-30 °C ~ 70 °C -22 °F ~ 158 °F	-40 °C ~ 85 °C -40 °F ~ 185 °F	-30 °C ~ 70 °C -22 °F ~ 158 °F 0%RH ~ 100%RH	-40 °C ~ 85 °C -40 °F ~ 185 °F 0%RH ~ 100%RH	-85 °C ~ 150 °C -121 °F ~ 302 °F	-196 °C ~ 150 °C -320.8 °F ~ 302 °F
	Digital Temperature Sensor		Digital Temperature and Humidity Sensor		Platinum Resistance Temperature Sensor PT100	
Accuracy	Temperature: ±0.3 °C (-20 °C ~ 40 °C); ±0.5 °F (-4 °F ~ 104 °F) ±0.5 °C (-50 °C ~ 85 °C); ±0.9 °F (-58 °F ~ 185 °F) ±1 °C (-100 °C ~ 150 °C); ±1.8 °F (-148 °F ~ 302 °F) ±2 °C/3.6 °F (others) Humidity: ±3%RH (25 °C; 20%RH ~ 80%RH); ±5%RH (others)					

2

Model Selection

Specifications

Resolution: Temperature: 0.1°C/0.1°F; Humidity: 0.1%RH

Memory: 16,000 points (MAX)

Logging Interval: 10 seconds ~ 24 hours

Start Mode: Press button or use software

Stop Mode: Press button, use software, or auto stop

Alarm Threshold: Configurable;
Temperature: up to 3 high limits and 2 low limits;
Humidity: 1 high limit and 1 low limit

Alarm Type: Single, cumulative

Alarm Delay: 10 seconds ~ 24 hours

Data Interface: USB port

Report Type: PDF data report

Battery: 3.6V disposable lithium battery 14250H (replaceable)

Battery Life: 2 years for storage and use at 10 minutes logging interval and below 25°C

Protection Level: IP65

External probe length: 1.5m

Dimensions: 100 x 46 x 19 mm (LxWxH)

3

Operation

1. Install Software

Please download and install the free ElitechLog software (macOS and Windows) from www.elitechlog.com/softwares.

2. Configure Parameters

First connect the data logger to the computer USB port, wait until the U icon shows on the LCD, then configure via:

ElitechLog software:

- If you do not need to change the default parameters (in Appendix); please click **Quick Reset** under **Summary** menu to synchronize local time before usage;
- If you need to change the parameters, please click the **Parameter** menu, enter your preferred values, and click the **Save Parameter** button to complete the configuration.

Warning! For first time user or after battery replacement:

To avoid time or time zone errors, please make sure you click **Quick Reset** or **Save Parameter** before usage to sync and configure your local time into the logger.

3. Start Logging

Press Button:

Press and hold the left button for 5 seconds until the ► icon shows on the LCD, indicating the logger starts logging.

Auto Start:

Immediate Start: The logger starts logging after plugged out from the computer.

Timed Start: The logger starts counting after removed from the computer, and will start logging automatically after the set date/time.

Note: If the ► icon keeps flashing, it means the logger configured with start delay; it will start logging after the set delay time elapses.

4. Mark Events

Press and hold the left button for 5 seconds to mark current temperature and time, up to 10 groups. After events marked, the LCD will display 📅 and currently marked groups.

4

5. Stop Logging

Press Button*: Press and hold the right button for 5 seconds until the  icon shows on the LCD, indicating the logger stops logging.

Auto Stop:** When the recorded points reach the maximum memory, the logger will stop automatically.

Use Software: Open ElitechLog software, click **Summary** menu, and **Stop Logging** button.

*Note: *Stop via **Press Button** is the default. If set as disabled, this function will be invalid, please open ElitechLog software and click **Stop Logging** button to stop it.*

***The **Auto Stop** function will be disabled automatically if you enabled the **Circular Logging**.*

6. Download Data

Connect the data logger to your computer USB port, wait until the U icon shows on the LCD, then download data:

Without ElitechLog Software: Simply find and open the removable storage device **ElitechLog**, save the auto generated PDF report to your computer for viewing.

With ElitechLog software: After the logger auto-upload its data to the ElitechLog software, click **Export** and select your preferred file format to export. If data failed to auto-upload, please manually click **Download** and then repeat above operation.

7. Re-use the Logger

To reuse a logger, please stopped it first.Then connect it to your computer and use ElitechLog software to save or export the data.

Next, reconfigure the logger by repeating the operations in **2. Configure Parameters***. After finished, follow **3. Start Logging** to restart the logger for new logging.

*Warning! * To make space for new loggings, all previous logging data inside the logger will be deleted after re-configuration. If you forgot to save/export data, please try to locate the logger in the **History** menu of ElitechLog software.*

8. Repeat Start:

To restart the stopped logger, you may press and hold the left button to start logging quickly without reconfiguration.

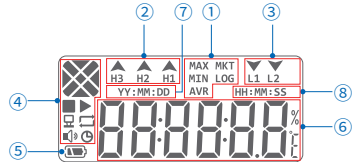
*Note: Please backup data before restart by repeating **6. Download Data** . **Without ElitechLog Software**.*

Status Indication

1. Buttons

Operations	Function
Press and hold the left button for 5s	Start logging
Press and hold the right button for 5s	Stop logging
Press and release the left button	Check/Switch interfaces
Press and release the right button	Back to main menu
Press and hold the left button for 5s	Mark events (under logging status)

2. LCD Screen



① Function	⑤ Battery Level
② High limit alarm	⑥ Temperature/Humidity Value
③ Low limit alarm	⑦ Date
④ Working status	⑧ Time

3. LCD Interface

Meaning	Display
1. Timed start	
Delay start	
2. Not start	
3. Started	
4. Recorded points	
5. Maximum temperature	
6. Minimum temperature	
7. MKT value	
8. Average temperature	
9. High temperature limit 3	
10. High temperature limit 2	
11. High temperature limit 1	
12. Low temperature limit 1	
13. Low temperature limit 2	
14. High humidity limit	

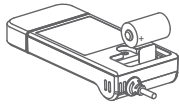
Meaning	Display
15. Low humidity limit	
16. Maximum humidity	
17. Minimum humidity	
18. Average humidity	
19. Current date & time	
20. Sensor error	
21. PDF generation progress	
22. No alarm	
23. Alarmed	
24. Marked	
25. Data deleted	
26. USB communicating	

Battery Replacement

1. Remove the screws, open the battery cover and take out the old battery.



2. Install a new battery with negative(-) towards the spring.



3. Mount the battery cover and tighten the screw.



What's Included

- ◆ Temperature (Humidity) Data Logger x 1
- ◆ User Manual x 1
- ◆ Certificate of Calibration x 1

Warning!

- ⚠ Please store your logger at room temperature.
- ⚠ If you use the logger for the first time, please use ElitechLog software to synchronize system time and configure parameters.
- ⚠ Do not remove the battery if the logger is logging.
- ⚠ The LCD screen will be auto off after 15 seconds of inactivity (by default). Press the button again to turn on the screen.
- ⚠ Any parameter configuration on ElitechLog software will delete all logged data inside the logger. Please save data before you apply any new configurations.
- ⚠ Do not use the logger for long-distance transport if the battery is not full.

Default Parameter Configurations

Parameter	Default
Logging Interval	10 min
Start Mode	Press Button
Start Delay	/
Stop Mode - Press Button	Enable
Temporary PDF	Enable
Temperature unit	°C
Time Zone	UTC+0:00
Repeat Start	Disable
Circular Logging	Disable
Alarm Mode	Multiple Alarms
Alarm Type	Single
Alarm delay	/
High Temperature Limit H3	/
High Temperature Limit H2	/
High Temperature Limit H1	8°C
Low Temperature Limit L1	2°C
Low Temperature Limit L2	/
Calibration Temperature	0°C
High Humidity Limit	/
Low Humidity Limit	/
Calibration Humidity	/